

Can You Dig It!? Weather Week



485 Molton St., Montgomery, AL

www.eatsouth.org

@eatsouth

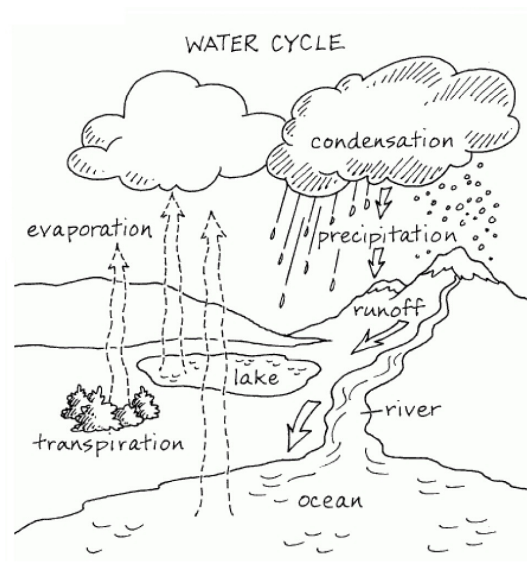
334-422-9331

facebook.com/eatsouth

What is weather?

Weather is the many factors that make up the condition of the outdoor environment of where you are now. Out the window it is sunny or rainy. Outside, laying in the grass you can feel a warm breeze or you are splashing in puddles and holding your umbrella. Some days we have big weather systems come through like tropical depressions that bring hail, winds and rain and even bring down tree limbs possibly causing the power to go out. Up north it snows a lot, here only a little. The patterns in our weather contribute to a bigger picture, what we call climate. Depending on your climate, the weather can vary greatly.

Some weather puts us and other biological life in a good mood. Take advantage of the nice days by being outside for a little while.



EAT South is an urban teaching farm that engages our local community by gathering around, learning about and growing food. We empower people to change the way food travels from the ground to our plates.



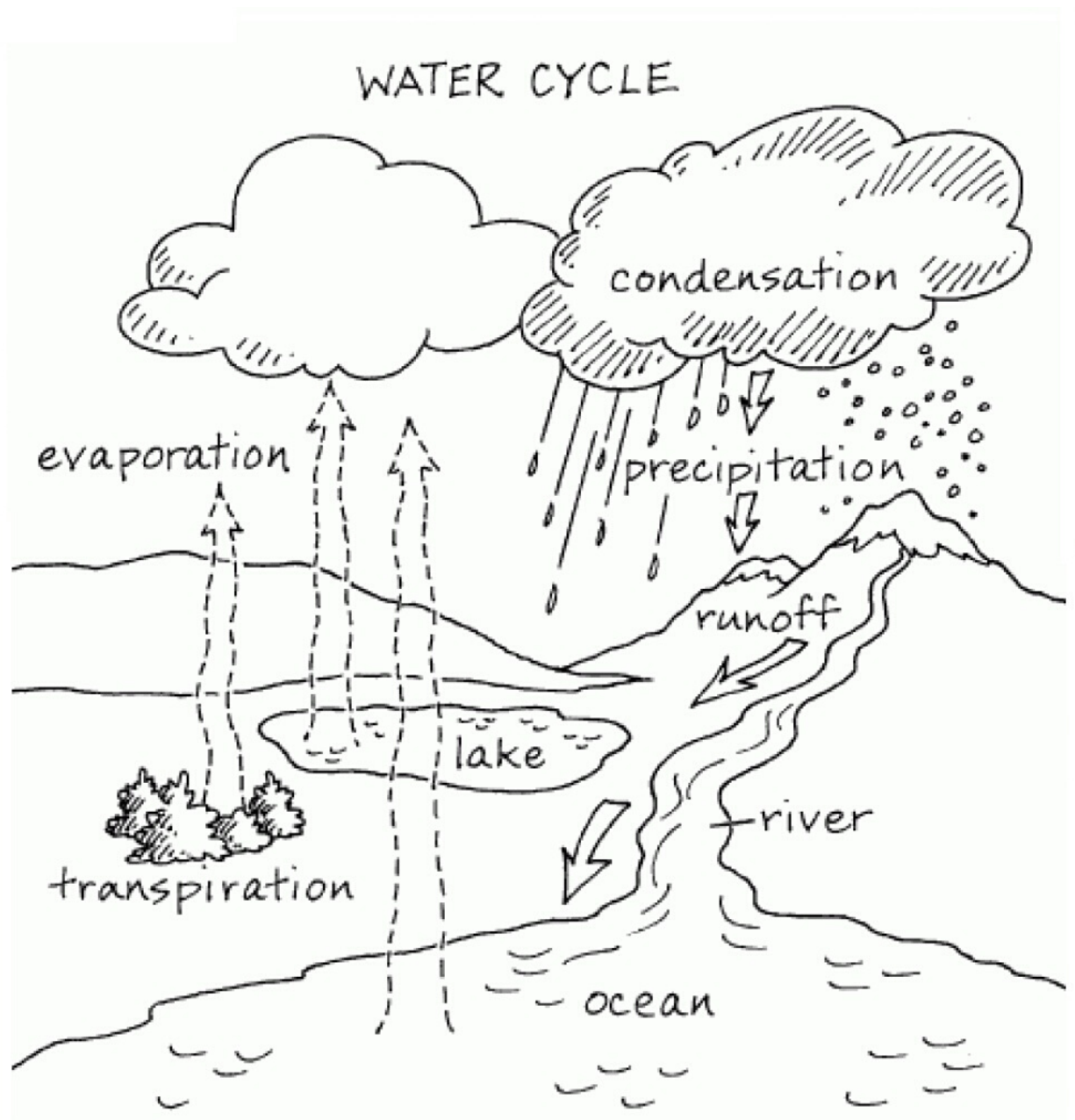
Instructions: Make S'mores in a Solar Oven

Read all instructions before beginning.

- Place foil on the inside of the box flap and wrap around edges to hold in place
- Place foil inside of the bottom of the box.
- Use chop sticks to hold the box open while cooking
- Place box out of the wind when in use

Cooking Instructions

- Place your solar oven in the sun.
- Place two pieces of graham cracker inside box.
- Place one marshmallow on each graham cracker.
- Place two more crackers in with chocolate on top.
- Close the lid of the box.
- Wait for the chocolate to melt and the marshmallow to grow before opening the box.
- When they are ready, open the box and sandwich the marshmallow cracker and the chocolate cracker together and enjoy.

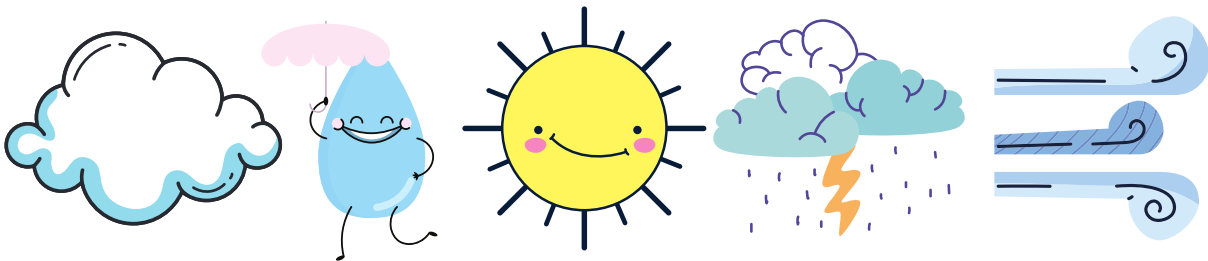
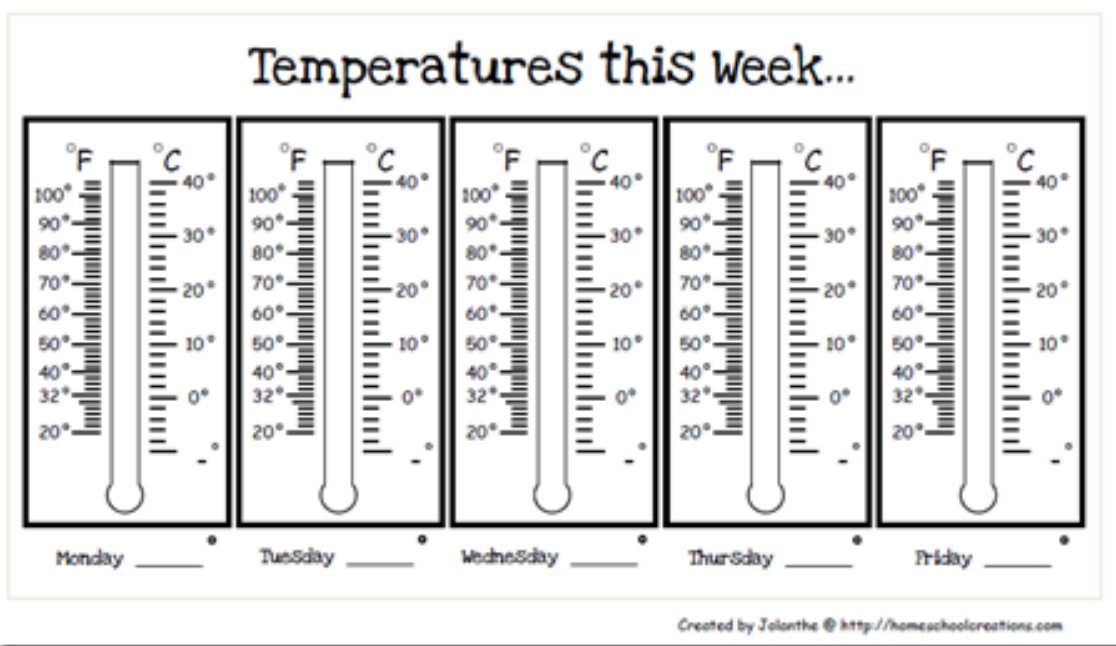


Did you know?

Glaciers are huge ice cubes located in cold places and often times in high elevation. Glaciers provide fresh water to countless billions of people, plants and animals. The weather cycle and in particular the water cycle near glaciers protects this valuable resource. What will people do if one day there are no more glaciers? Where will the fresh water come from?

Nature Journal

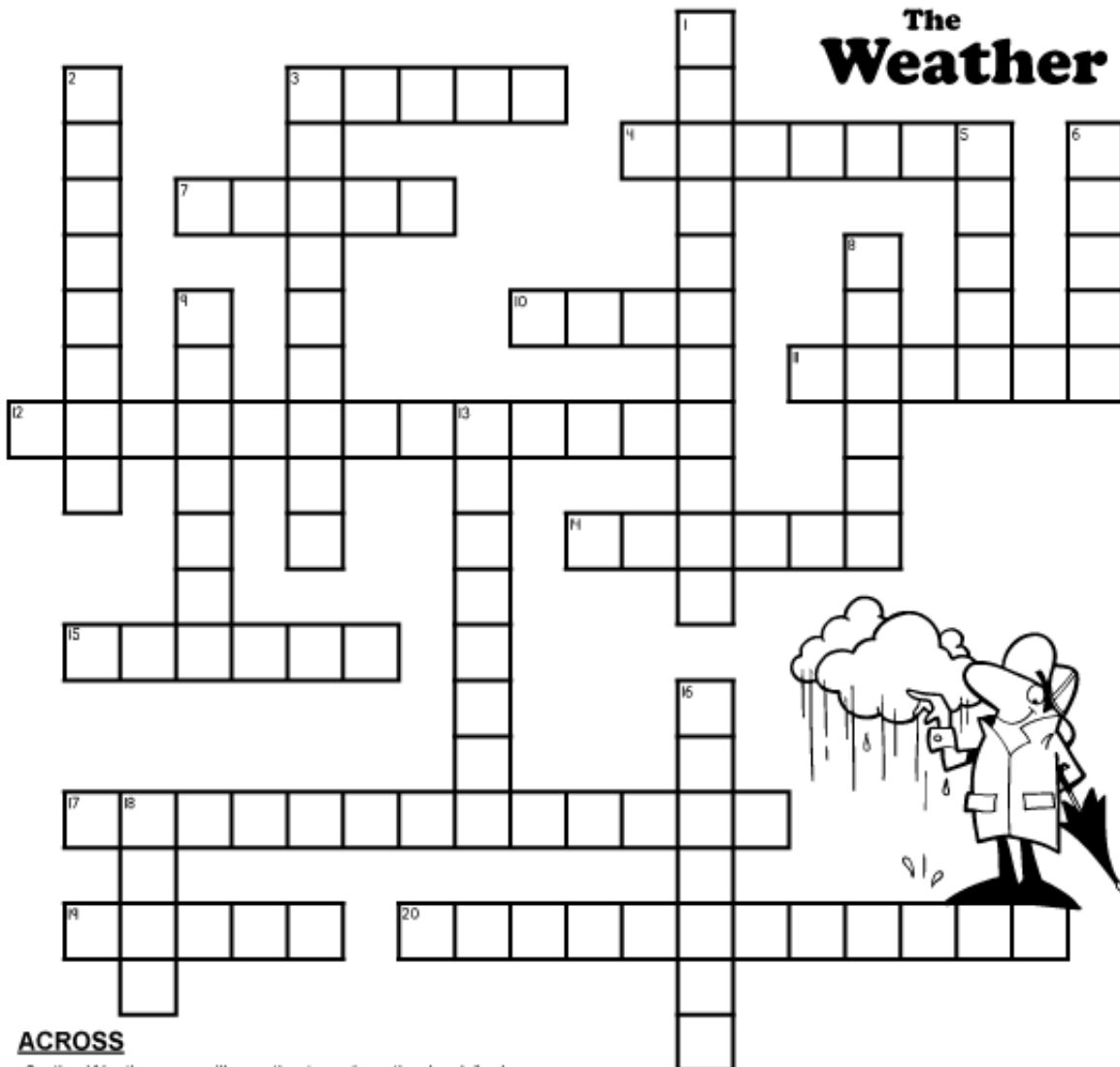
Have you ever observed and recorded the weather over time? Maybe it's time to start. Here is one idea for your nature journal. Color a red line up to the high temperature and a blue line up to the low temperature for the day.



Journaling tips

- Today, draw something in nature that you found to be beautiful. Can you identify it? What would you name it?
- Today, draw something in nature that you found to be weird. What stuck you as weird? Can you describe it in one sentence? Where did you find it? Describe it's in environment.
- One day a week, challenge yourself to sit quietly outside in a new spot in your yard, or neighborhood for 5-10 minutes. Write or draw what you see, hear, smell, or feel. Can your recreate the experience for a friend by writing one or two sentences?

The Weather



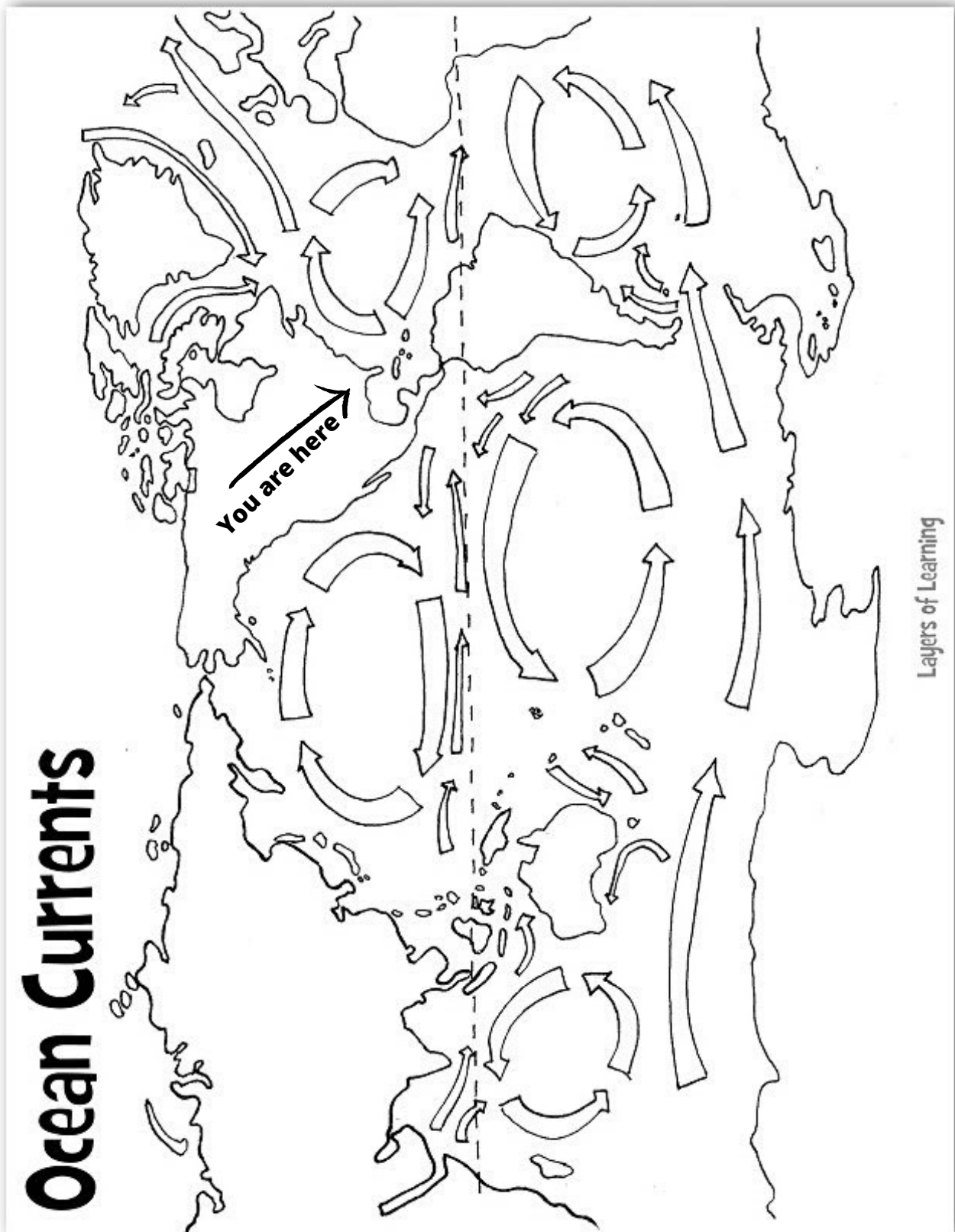
ACROSS

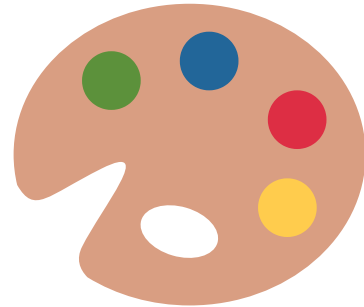
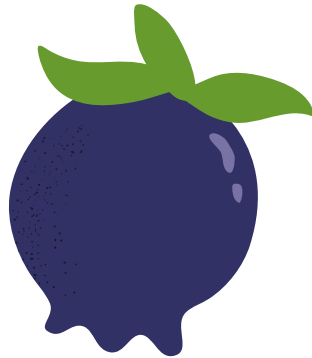
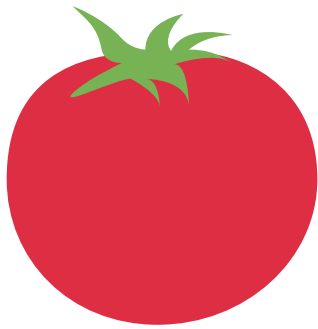
3. the Weatherman will use the term "mostly cloudy" when there are ___ eighths of cloud cover
4. smaller than normal drops of rain
7. ___ rain; the adjective the Weatherman will use when there's a lot of rain in a time period
10. a unit of measurement used to describe the amount of cloud cover at any given location
11. when there is 1/8 - 2/8 of the sky covered by clouds, a Weatherman will say it is ___ sunny
12. another word for a Weatherman
14. the Weatherman says it's cloudy when there's at least ___ percent of the sky covered with clouds
15. when 3/8 to 5/8 of the sky is covered by clouds, we say it is ___ sunny or ___ cloudy
17. water that falls from the clouds as rain, snow, sleet, or hail
19. snow and rain at the same time or place is called ___ precipitation
20. a storm that has lightning and thunder

DOWN

1. predicting or guessing future weather
2. an adjective that is used when only 30 - 50% of an area will be affected
3. an adjective that is used when only 10 - 20% of an area is likely to be affected
5. When trying to measure how much of the sky the clouds cover, how many equal parts does the Weatherman divide the visible sky into?
6. when there are no clouds in the sky
8. when all or almost all of the sky is covered with clouds
9. the Weatherman will use different adjectives to describe how much rain falls in this period of time (2 words)
13. the term used when clouds cover at least 95% of the sky
16. shorter duration than rain, suddenly starts or stops
18. the word the Weatherman will use when the amount of time it rains is steady and for a long time

Weather patterns are affected by ocean currents bringing warm and cool air around the globe affecting the water cycle.





Up Next:

Here are the themes for the rest of the month. Stay tuned to Facebook for more information. If you want to receive emails about kids' activities, contact Farmer Amanda, goodfoodday@eatsouth.org.

June 22 Tomato Week - Tomato week kicks off three weeks focused on fruit. We'll learn some kitchen science and share fun recipes.

June 29 Eating the Rainbow - This week, we're talking about blueberries, eat blueberries, share recipes for blueberries.

More to come in July including a call for all of our kid artists to help us decorate the farm. Stay tuned.

MORE INFO:
Facebook LIVE @eatsouth
Tues-Thurs 9AM
www.eatsouth.org/blog